

Anti-RSV hIgG1 Antibody (palivizumab)

Product information

GM-79650AB-10	10 µg
GM-79650AB-100	100 µg
GM-79650AB-1000	1 mg

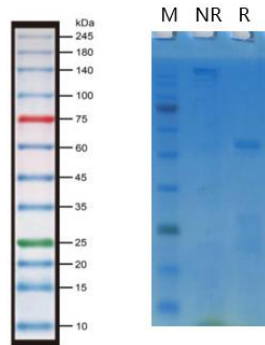
Antibody Information

Species Reactivity	Human;
Clone	palivizumab
Source/Isotype	Monoclonal human IgG1, κ
Application	/
Specificity	Detects RSV
Gene	RSV
Other Names	MEDI 493
Background	<p>Respiratory Syncytial Virus (RSV) is a virus that primarily causes respiratory infections in infants, young children, and the elderly. RSV infections typically result in mild cold-like symptoms, but in high-risk groups, such as premature infants, immunocompromised individuals, and older adults, it can lead to severe lower respiratory tract diseases, including bronchiolitis and pneumonia.</p> <p>Palivizumab is a humanized monoclonal antibody that is primarily used to prevent severe respiratory infections caused by respiratory syncytial virus (RSV), particularly in high-risk infants and young children. RSV is a common virus that usually causes mild to moderate respiratory infections, but in some high-risk children (such as premature infants, heart and lung disease, or children with weakened immune systems), RSV infection may lead to severe pneumonia and hospitalization.</p>
Storage	Store at 2-8°C short term (1-2 weeks). Store at ≤ -20°C long term. Avoid repeated freeze-thaw.
Formulation	Phosphate-buffered solution, pH 7.2.
Endotoxin	< 1 EU/mg, determined by LAL gel clotting assay

Version:3.1

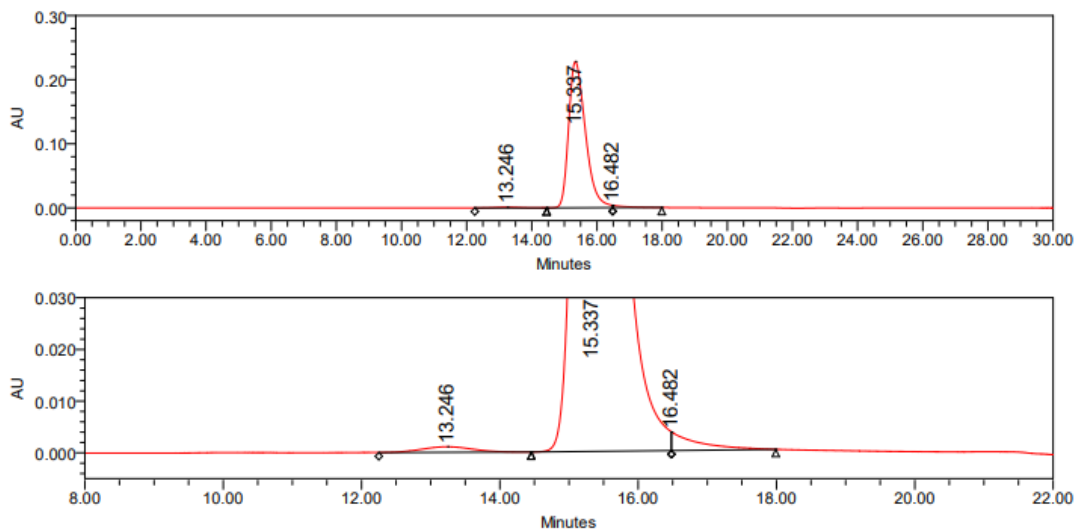
Data Examples

SDS-PAGE



On SDS-PAGE under reducing (R)/non-reducing(N-R) condition. The gel was stained overnight with Coomassie Blue. The purity of the protein is greater than 95%.

SEC-HPLC



The purity of this product is more than 95% verified by SEC-HPLC